

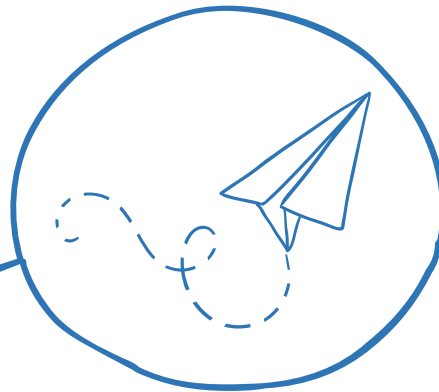
# Air travel related work and activities of member universities

Australasian Universities Air Travel Consortium

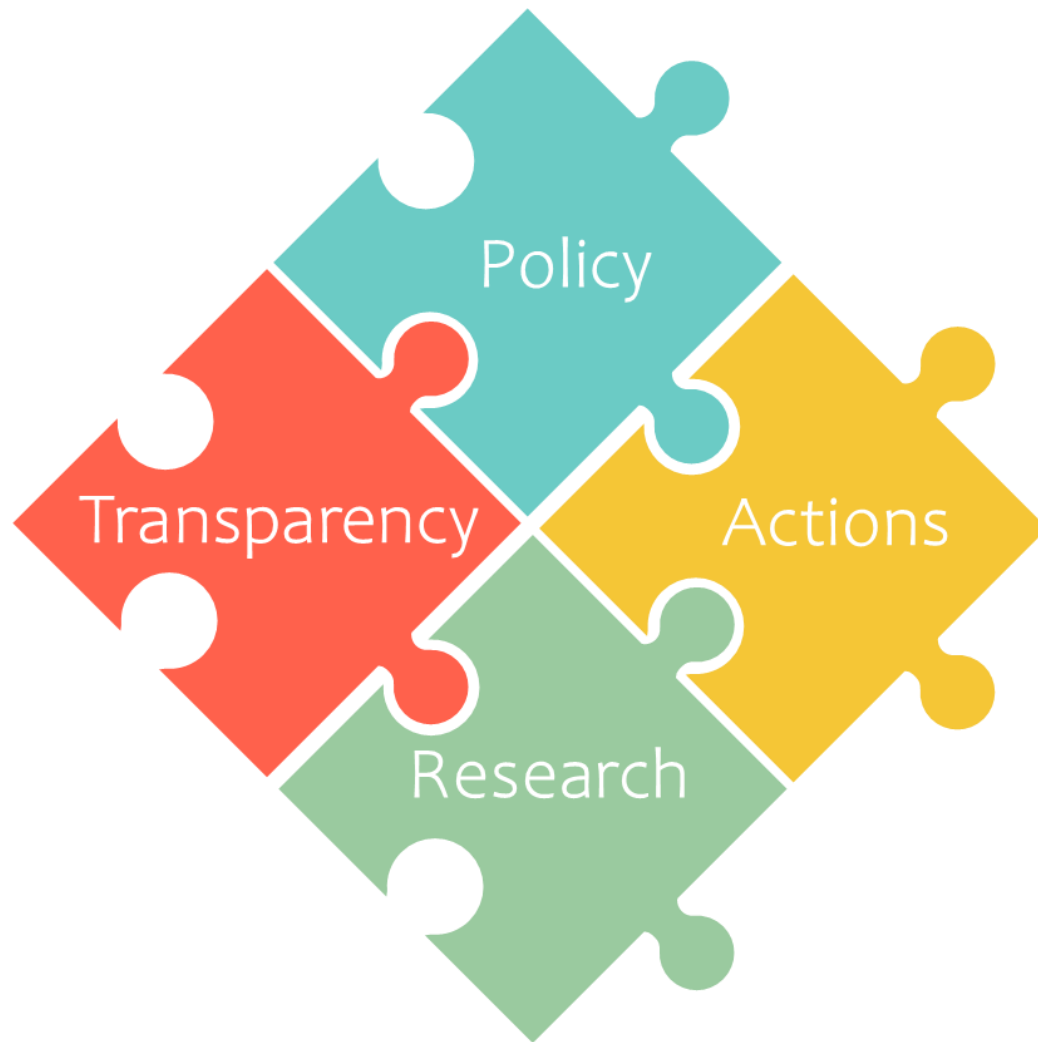
April 2023



## Australasian Universities Air Travel Consortium (AUATC)



A network of academics within  
New Zealand and Australian  
universities which forms as a  
collective voice to coordinate  
and advise on academic flying  
policies and practices.



The AUATC seeks to establish a baseline of current air travel policy initiatives at NZ & AU universities. This document reviews universities' current air travel actions based on policy, transparency, research and other relevant actions.

You may contact our consortium members if you have any queries or need more detailed information.

# Policy



## Carbon neutral targets or action plans

<ul style="list-style-type: none"> <li>- Te Rautaki Aronga Toitū  Sustainability Strategy 2030</li> <li>- Te Taumata Tukuwaro-kore   Net Zero Carbon Strategy</li> <li>- Sustainability and Net Carbon Zero strategies (approved, launch in 2023)</li> </ul>	<p>AUT's Sustainability Roadmap</p>	<p>Carbon net neutral by 2030 Sustainability Plan Sustainability Policy</p>	<p>Sustainability Policy and Sustainability Plan include target of carbon neutral by 2030</p>
<p><b>Auckland</b></p>	<p><b>AUT</b></p>	<p><b>Canterbury</b></p>	<p><b>Lincoln</b></p>
<p>Climate Action Plan 2021 – 2030 (with net zero carbon by 2030)</p>	<p>Net Carbon Zero (by 2030)</p>	<p>Sustainability Plan</p>	<p>Zero Carbon Plan</p>
<p><b>Massey</b></p>	<p><b>Otago</b></p>	<p><b>Waikato</b></p>	<p><b>Victoria</b></p>
	<ul style="list-style-type: none"> <li>- Halving carbon emissions by 2030</li> <li>- Net zero carbon emissions by 2050</li> </ul>	<p>Emissions Reduction Strategic Plan 2022-2030</p>	
<p><b>ANU</b></p>	<p><b>Griffith</b></p>	<p><b>Tasmania</b></p>	

## Related offices or committees

<ul style="list-style-type: none"> <li>- Sustainability Office</li> <li>- Sustainability Strategy and implementation working Group</li> </ul>	<ul style="list-style-type: none"> <li>- Sustainability Steering Group (SSG)</li> <li>- The Director of Sustainability</li> <li>- Sustainability Graduate</li> </ul>	<ul style="list-style-type: none"> <li>- Pro-Vice-Chancellor Sustainability</li> <li>- Sustainability office</li> <li>- The Sustainability Committee of Academic Board</li> <li>- UC Sustainability Programme Board</li> </ul>	<p style="text-align: center;">Sustainability Taskforce, chaired by VC; Sustainability Action Group for the Environment (SAGE)</p>
<b>Auckland</b>	<b>AUT</b>	<b>Canterbury</b>	<b>Lincoln</b>
<ul style="list-style-type: none"> <li>- Sustainability, Policy &amp; Communications Office</li> <li>- Sustainability and Climate Action Steering Group</li> <li>- Sustainability and Climate Action Advisory Group</li> </ul>	<ul style="list-style-type: none"> <li>- Sustainability Office</li> <li>- Air Travel Project Steering Group</li> <li>- Net Carbon Zero Programme Board</li> <li>- Sustainability Strategic Framework Advisory board</li> </ul>	<p>Environmental Sustainability Committee (Advisory to the VC)</p>	<p>Sustainability Team (With a governance panel that comprises the VC, Provost and COO)</p>
<b>Massey</b>	<b>Otago</b>	<b>Waikato</b>	<b>Victoria</b>
	<p>Sustainability Sub-Committee</p>	<ul style="list-style-type: none"> <li>- The University Sustainability Committee</li> <li>- Air Travel Emissions Management working group</li> </ul>	
<b>ANU</b>	<b>Griffith</b>	<b>Tasmania</b>	

## Organisational structures

<ul style="list-style-type: none"> <li>- Sustainability office (reports to the head of property services and the registrar)</li> <li>- Strategy working group reports to DVC Strategic Engagement</li> </ul>	<ul style="list-style-type: none"> <li>- The SSG reports directly to the VC (as a source of advice and representation of sustainability AUT)</li> <li>- Director of Sustainability (responsible for reports)</li> </ul>	<ul style="list-style-type: none"> <li>- PVC Sustainability (responsible for reporting) → VC</li> <li>- Sustainability Manager → FM and PVC Sust</li> <li>- Sustainability Committee → Academic Board and hence Council</li> </ul>	<ul style="list-style-type: none"> <li>- Sustainability Taskforce - chaired by VC</li> <li>- New ways of Operating (Strategy) includes sustainability and reports to He Toki Tārai (Futures Subcommittee of Council)</li> </ul>
<b>Auckland</b>	<b>AUT</b>	<b>Canterbury</b>	<b>Lincoln</b>
<ul style="list-style-type: none"> <li>- Governance - Climate Action Plan overseen by Sustainability and Climate Action Steering Group, which reports to SLT</li> <li>- Management - Sustainability Office reports through Facilities Services to DVC University Services</li> </ul>	<ul style="list-style-type: none"> <li>- Air Travel project → Net Carbon Zero Programme → Sponsoring Group (Senior Leadership Team)</li> <li>- Capital Development Committee and University Council approval is also required for capital investments</li> </ul>	<p style="text-align: center;">Assistant Vice Chancellor Sustainability</p> <p style="text-align: center;">(developing the structure of the Sustainability Committee so that each unit / programme / school / division will have responsibilities and opportunities to report)</p>	<p style="text-align: center;">Sustainability Team</p> <p style="text-align: center;">(reports on progress towards zero carbon plan goals on a quarterly basis through annual management plan to the Senior Leadership Team and the University Council)</p>
<b>Massey</b>	<b>Otago</b>	<b>Waikato</b>	<b>Victoria</b>
	<p style="text-align: center;">Sustainability Manager for Griffith University (within the Corporate Governance and Sustainability team)</p>	<ul style="list-style-type: none"> <li>- The Sustainability Committee consists of representatives from all Colleges, Divisions and students</li> <li>- The Committee takes direction from and reports through the Chair (Chief Sustainability Officer) and Deputy Chair (a senior academic) to the University Executive Team Sustainability working group</li> </ul>	
<b>ANU</b>	<b>Griffith</b>	<b>Tasmania</b>	

# Transparency





## Published carbon emission reports

<p>Annual report (Energy consumption, Wastewater volumes, Paper usage, Solid waste to landfill, CO2 emissions/EFTS)</p>	<ul style="list-style-type: none"> <li>- AUT's CO2 report</li> <li>- Will publish and include 2018 baseline and 2020 CO2 inventory soon</li> </ul>	<ul style="list-style-type: none"> <li>- Our energy journey – strategies neutralise carbon emissions</li> <li>- Te Pūrongo ā-Tau Annual Report 2021 – performance and vision</li> <li>- Annual Sustainability Report</li> </ul>	<ul style="list-style-type: none"> <li>- Greenhouse Gas Emission Inventory Report</li> <li>- Carbon Reduce certification</li> <li>- An audit including Lincoln's farms is being finalised</li> </ul>
<p><b>Auckland</b></p>	<p><b>AUT</b></p>	<p><b>Canterbury</b></p>	<p><b>Lincoln</b></p>
<p>Toitū verified documentation for 2018, 2019, 2020 &amp; 2021</p>	<p>Verified greenhouse gas inventory reports for 2019, 2020 and 2021</p>	<ul style="list-style-type: none"> <li>- Whaioranga Taiao, Whaioranga Tangata</li> <li>- Annual Reports</li> </ul>	<p>2020 Sustainability Report (GHG inventory)</p>
<p><b>Massey</b></p>	<p><b>Otago</b></p>	<p><b>Waikato</b></p>	<p><b>Victoria</b></p>
	<p>Carbon Management Report, November 2021</p>	<ul style="list-style-type: none"> <li>- Annual Greenhouse Gas Inventory</li> <li>- A public disclosure statement is also publicly available in the Climate Active website</li> </ul>	
<p><b>ANU</b></p>	<p><b>Griffith</b></p>	<p><b>Tasmania</b></p>	

## Does the university benchmark carbon emissions?

<p>Yes</p> <ul style="list-style-type: none"> <li>- 2019 Bench mark completed</li> <li>- Current Audit activity around 2020,2021 carbon emissions</li> </ul>	<p>Yes</p> <ul style="list-style-type: none"> <li>- Via the TEFMA annual reporting process</li> </ul>	<p>Yes</p> <ul style="list-style-type: none"> <li>- For Air travel though Orbit</li> <li>- Toitū verified documentation</li> </ul>	<p>Yes</p>
<p><b>Auckland</b></p>	<p><b>AUT</b></p>	<p><b>Canterbury</b></p>	<p><b>Lincoln</b></p>
<p>Yes</p> <ul style="list-style-type: none"> <li>- A 2018 baseline measurement with commitment to be net zero carbon by 2030</li> <li>- TEFMA</li> </ul>	<p>Yes</p> <ul style="list-style-type: none"> <li>- 2019 baseline measurement year.</li> <li>- Pariticipate in TEFMA reporting but not directly comparing emissions to other organisations at this stage</li> </ul>	<p>Yes</p> <ul style="list-style-type: none"> <li>- For electrical and gas usage, travel and stored greenhouse gases. Data being used to help prioritise asset replacement and comparison of available technologies</li> <li>- Funding from the State Sector Decarbonisation Fund</li> </ul>	<p>Kind of</p> <ul style="list-style-type: none"> <li>- Participating in the TEFMA reporting</li> </ul>
<p><b>Massey</b></p>	<p><b>Otago</b></p>	<p><b>Waikato</b></p>	<p><b>Victoria</b></p>
	<p>Yes</p> <ul style="list-style-type: none"> <li>- Compares performance to the baseline, the previous year and the higher education sector TEFMA benchmarks</li> </ul>	<p>Yes</p> <ul style="list-style-type: none"> <li>- Compares performance to the baseline and previous years and the higher education sector Tertiary Education Facilities Management Association (TEFMA) benchmarks.</li> </ul>	
<p><b>ANU</b></p>	<p><b>Griffith</b></p>	<p><b>Tasmania</b></p>	

# Research



## Research projects, centres or specific units

<ul style="list-style-type: none"> <li>- University Research Centre Ngā Ara Whetū: Centre for Climate, Biodiversity and Society</li> <li>- Sustainability office has collating data as part of its mandate</li> <li>- Science Faculty: a sustainability survey and interview project with a focus on air travel</li> </ul>	<p>Air Travel Tax and Sustainable Tourism Discussion</p>	<ul style="list-style-type: none"> <li>-Interested individuals</li> <li>- Research groups particularly in science and engineering</li> <li>- A master's student is analysing a second more focussed staff survey about intentions to travel</li> </ul>	<ul style="list-style-type: none"> <li>- Centre of Excellence, mainly focusing on domestic mobilities</li> <li>- Ongoing international research collaboration</li> </ul>
<p><b>Auckland</b></p>	<p><b>AUT</b></p>	<p><b>Canterbury</b></p>	<p><b>Lincoln</b></p>
<ul style="list-style-type: none"> <li>- Re-imagining Massey staff international air travel</li> <li>- Work focuses on post-travel process, embedding online culture, &amp; requirements for improved data tracking of travel.</li> </ul>	<ul style="list-style-type: none"> <li>- The examination of academic flying cultures</li> <li>- Transport Research Network, research related to transportation, not focusing on air travel at present</li> <li>- Research project on optimising conference timing</li> </ul>	<ul style="list-style-type: none"> <li>- No air travel related</li> <li>- Transport research group which is car focused</li> </ul>	<ul style="list-style-type: none"> <li>- Planet Friendly Conferences</li> <li>- Internal air travel minimisation pledge</li> <li>- Development of gamified app to engage staff with their contribution to University carbon footprint</li> </ul>
<p><b>Massey</b></p>	<p><b>Otago</b></p>	<p><b>Waikato</b></p>	<p><b>Victoria</b></p>
	<ul style="list-style-type: none"> <li>- Griffith Aviation</li> <li>- Cities Research Institute (CRI), Griffith Institute for Tourism (GIFT), Climate Action Beacon (CAB), and the Safety Science Innovation Lab.</li> </ul>	<ul style="list-style-type: none"> <li>- A survey on air travel by all staff at all levels of the university.</li> </ul>	
<p><b>ANU</b></p>	<p><b>Griffith</b></p>	<p><b>Tasmania</b></p>	

## Research and work related to travel policy

<ul style="list-style-type: none"> <li>- Carbon audit &amp; reduction, the sustainability office establishes carbon cost for use</li> <li>- A draft travel plan, including local air travel, will be reviewed when the sustainability strategy is finalised</li> </ul>	<ul style="list-style-type: none"> <li>- International travel procedure (Jun 2022 to Dec 2023. No international travel, unless some significant criteria can be met and senior level sign off is provided.)</li> </ul>	<p style="text-align: center;">Review of Air travel policy underway</p>	<p style="text-align: center;">Ongoing work by the Air Travel Working Group, including reviewing travel policy</p>
<b>Auckland</b>	<b>AUT</b>	<b>Canterbury</b>	<b>Lincoln</b>
<ul style="list-style-type: none"> <li>- Data analysis, staff survey, focus groups, workshops, consultation with senior management</li> <li>- Procurement leading travel policy review</li> </ul>	<ul style="list-style-type: none"> <li>- Work was done on internal barriers to reducing air travel emissions</li> <li>- Policy changes have been approved to policies such as Research &amp; Study Leave, Conference Leave, Travel &amp; Travel Related Costs have been updated</li> </ul>	<p style="text-align: center;">Air travel working group are reviewing the environmental impact of air travel and formulating new policy to reduce it</p>	No
<b>Massey</b>	<b>Otago</b>	<b>Waikato</b>	<b>Victoria</b>
	<ul style="list-style-type: none"> <li>- Aviation Emission Reduction Working Group</li> <li>- Staff air travel behaviour on university business and possible pathways</li> </ul>	<ul style="list-style-type: none"> <li>- Sustainability Committee's Air Travel Emissions Management working group</li> <li>- A publication on the principles and practices of reducing the carbon footprint of academic work</li> </ul>	
<b>ANU</b>	<b>Griffith</b>	<b>Tasmania</b>	

## Ongoing research

<p>A project evaluating the relative travel across faculty and to develop is now completed and to be shared within the faculty and with deans</p>	<p>No</p>	<p>A Masters student is looking at behaviours and driver for changing air travel habits.</p>	<p>No</p>
<p><b>Auckland</b></p>	<p><b>AUT</b></p>	<p><b>Canterbury</b></p>	<p><b>Lincoln</b></p>
<p>- To develop a wrap around for (front and) back ends of staff international travel to increase benefits and collegiality connectivity, upgrade travel tracking functionalities and embed online culture and practices</p>	<p>- Work was done on internal barriers to reducing air travel emissions - Policy changes have been approved to policies such as Research &amp; Study Leave, Conference Leave, Travel &amp; Travel Related Costs have been updated</p>	<p>See research on law and climate rulings by <a href="#">Nathan Cooper</a></p>	<p>The first project started before the pandemic and is still going but has changed direction as a result of the pandemic</p>
<p><b>Massey</b></p>	<p><b>Otago</b></p>	<p><b>Waikato</b></p>	<p><b>Victoria</b></p>
	<p>- 5 Aviation Reimagined seminar series in Sep &amp; Oct - Environmental issues associated with air transport and the development of sustainable aviation fuels</p>	<p>- A survey on air travel by all staff at all levels of the university.</p>	
<p><b>ANU</b></p>	<p><b>Griffith</b></p>	<p><b>Tasmania</b></p>	

# Actions



## Policy actions

<ul style="list-style-type: none"> <li>- Te Rautaki Arongo Toitu/ Sustainability strategy and plan to be completed by October 2022</li> <li>- A discussion paper on carbon and air travel will be circulated prior to consultation</li> <li>- Carbon emission data for common air travel is provided to HoDs</li> </ul>	<ul style="list-style-type: none"> <li>- A draft policy and set of guidelines</li> <li>- “No travel” position for AUT funded travel</li> </ul>	<ul style="list-style-type: none"> <li>- Travel policy draft</li> <li>- Air Travel policy plan of action has commenced, by using a think tank of people interested in behaviour change and how to achieve it</li> </ul>	<ul style="list-style-type: none"> <li>- Air travel reduction target for 2030 of 50% of 2019 levels</li> <li>- The Travel Policy has been updated to give explicit recognition to climate change and greenhouse gas emissions</li> <li>- Air Travel Guidelines have also been approved</li> </ul>
<p><b>Auckland</b></p>	<p><b>AUT</b></p>	<p><b>Canterbury</b></p>	<p><b>Lincoln</b></p>
<ul style="list-style-type: none"> <li>- Travel policies in review</li> <li>- Recommendations to SLT in May 2023</li> </ul>	<ul style="list-style-type: none"> <li>- The air travel project involved stakeholder engagement of barriers to behavioural change, including policy and processes</li> <li>- Changes to University-wide policies have been approved and are now live</li> </ul>	<p>Under review</p> <ul style="list-style-type: none"> <li>- To provide alternatives to air travel</li> <li>- In the process of setting policy for air travel in line with our projected reductions targets for 2025 and 2030.</li> <li>- Updating Travel Policy, based on staff survey results.</li> </ul>	<ul style="list-style-type: none"> <li>- In Jan 2020, a 5% internal carbon levy introduced to all University booked flights</li> <li>- In 2023 air travel carbon targets will be introduced</li> <li>- Academic promotion process will be updated in 2023 to reflect carbon targets along with Travel Policy.</li> </ul>
<p><b>Massey</b></p>	<p><b>Otago</b></p>	<p><b>Waikato</b></p>	<p><b>Victoria</b></p>
	<p>Griffith University’s Strategic Plan 2020-2025 (reducing its emissions from air travel by 25% by 2030, from the 2010 baseline)</p>	<p>The Emissions Reduction Strategic Plan 2022-2030 aims to implement an internal carbon price and establish a cap on non-research related air travel per business unit.</p>	
<p><b>ANU</b></p>	<p><b>Griffith</b></p>	<p><b>Tasmania</b></p>	



## Funding actions

<p>There are a number of strategic funding opportunities that could support such a project, but no specific funding identified</p>	<p>No</p>	<p>All booked air travel is visible to PVC Sustainability</p>	<ul style="list-style-type: none"> <li>- 5% Air Travel Tax from the start of 2023 on all flights booked and paid by the University will be implemented</li> <li>- These will form the basis for a Sustainability Fund to support staff to develop their academic endeavours</li> </ul>
<p style="text-align: center;"><b>Auckland</b></p>	<p style="text-align: center;"><b>AUT</b></p>	<p style="text-align: center;"><b>Canterbury</b></p>	<p style="text-align: center;"><b>Lincoln</b></p>
<p>Senior management require % reduction per unit/department</p>	<p>Departmental air travel budgets reduced to reflect the level of target level of emissions at the University-wide level</p>	<p>All applications for air travel are reviewed by the VC</p>	<ul style="list-style-type: none"> <li>- 5% internal carbon levy applied to all University booked flights</li> <li>- Internal international travel financial budgets are set in line with carbon targets.</li> </ul>
<p style="text-align: center;"><b>Massey</b></p>	<p style="text-align: center;"><b>Otago</b></p>	<p style="text-align: center;"><b>Waikato</b></p>	<p style="text-align: center;"><b>Victoria</b></p>
	<p>It is hoped that there will be subsequent funding actions related to air travel behaviour by the university during the period 2023 - 2030</p>	<p>The implementation of an internal carbon price is being piloted in one College and two Divisional areas using a carbon budget approach that accompanies financial budgets</p>	
<p style="text-align: center;"><b>ANU</b></p>	<p style="text-align: center;"><b>Griffith</b></p>	<p style="text-align: center;"><b>Tasmania</b></p>	

## Carbon accounting actions

<p style="text-align: center;">Carbon Audit</p> <ul style="list-style-type: none"> <li>- Completed based on 2019 travel data</li> <li>- Identifying air travel by staff and international students</li> </ul>	<p>No</p>	<ul style="list-style-type: none"> <li>- Analysis commenced 2022</li> <li>- Review by Deloitte on institutional reporting frameworks</li> </ul>	<p>Much more granular reporting on air travel provided by Orbit to help identify flights by faculty/division.</p>
<p><b>Auckland</b></p>	<p><b>AUT</b></p>	<p><b>Canterbury</b></p>	<p><b>Lincoln</b></p>
<p>Initial meetings have taken place to conceptualise and define 'carbon accounting</p>	<ul style="list-style-type: none"> <li>- Track and report on University air travel emissions</li> <li>- More frequent internal reporting</li> <li>- Also measure and report on student air travel emissions and working with student association to improve data and support behaviour change</li> </ul>	<ul style="list-style-type: none"> <li>- There will be a survey to all Waikato academics</li> <li>- Requesting more information / reports from our travel provider</li> </ul>	<p>More granular reporting (provided by APX P-card bookings to ensure accurate reporting)</p>
<p><b>Massey</b></p>	<p><b>Otago</b></p>	<p><b>Waikato</b></p>	<p><b>Victoria</b></p>
	<p>Not yet</p>	<ul style="list-style-type: none"> <li>- The implementation of an internal carbon price</li> <li>- All staff have access to a dashboard showing air travel emissions over time and per College/Division, discipline and school.</li> </ul>	
<p><b>ANU</b></p>	<p><b>Griffith</b></p>	<p><b>Tasmania</b></p>	

### Other actions

<p>Carbon Zero strategy (In consultation and proposes 50 % reduction of work related staff air travel by 2030)</p>	<p>International travel banned in 2020 and 2021 due to Covid</p>	<p>Existing Travel Management Plan (Widely circulated which mentions air travel and permissions required)</p>	<p>Increase digital-enabled technology for meetings/conferences</p>
<p style="text-align: center;"><b>Auckland</b></p>	<p style="text-align: center;"><b>AUT</b></p>	<p style="text-align: center;"><b>Canterbury</b></p>	<p style="text-align: center;"><b>Lincoln</b></p>
<p>All international travel applications require approval by senior management</p>	<ul style="list-style-type: none"> <li>- Engagement with staff</li> <li>- A web page on air travel and emissions, including FAQ from engagements to date</li> <li>- Collaboration with the Otago University Students Association on student air travel emissions</li> </ul>	<p>A new group to develop assessment of air travel, seek staff input regarding changes, and propose options to reduce air travel</p>	<p>Provision of video conferencing alternatives</p>
<p style="text-align: center;"><b>Massey</b></p>	<p style="text-align: center;"><b>Otago</b></p>	<p style="text-align: center;"><b>Waikato</b></p>	<p style="text-align: center;"><b>Victoria</b></p>
<p style="text-align: center;">ANU</p>	<p style="text-align: center;">Not yet</p>	<p>The need to include identification and encouragement for staff to individually make a pledge to reduce air travel</p>	
	<p style="text-align: center;"><b>Griffith</b></p>	<p style="text-align: center;"><b>Tasmania</b></p>	

# Thank you.

You may find more information  
on [the AUATC website](#).

